



Unicomp Technology

A Leader in the Intelligent X-Ray  
Inspection Equipment

# LX2000

Inline X-Ray Inspection Equipment



[www.global-xray.com](http://www.global-xray.com)

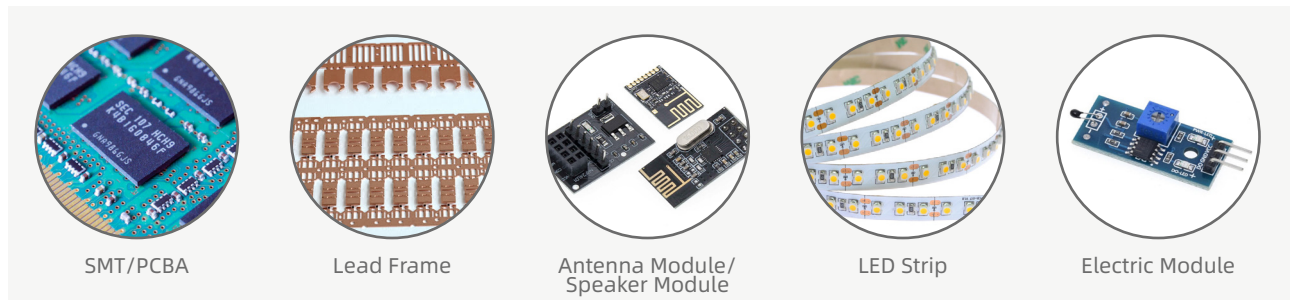
# LX2000



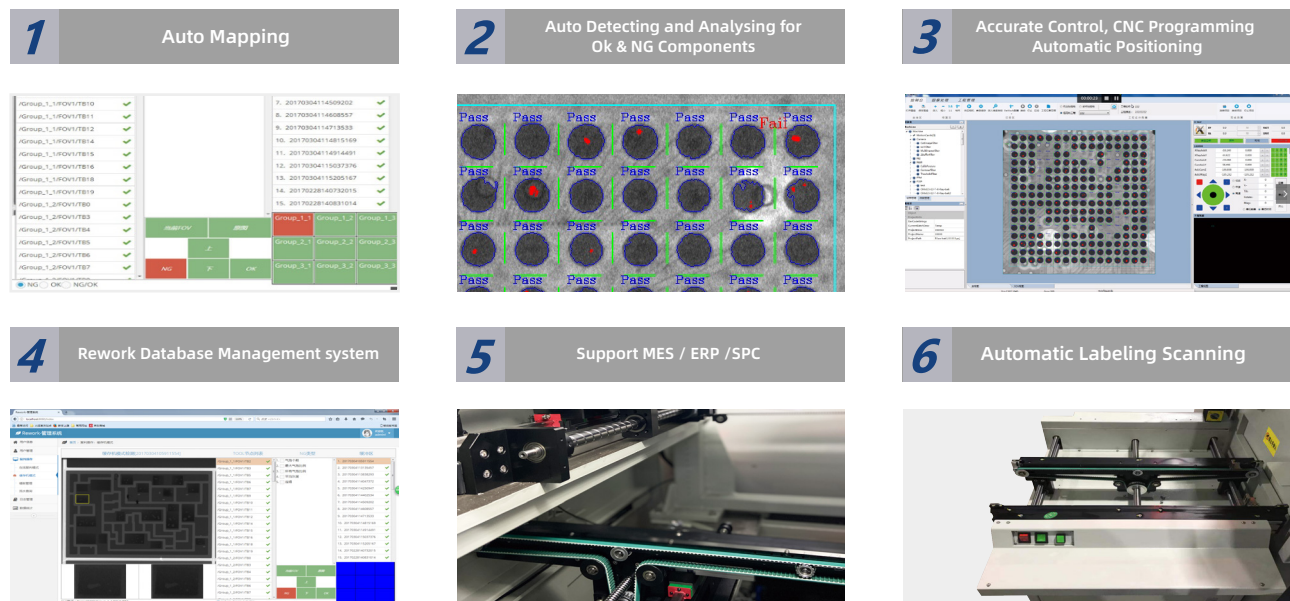
Unicomp Technology

Widely applied for BGA , CSP , Flip Chip, LED , Fuse, Diode, PCB, Semiconductor, Battery Industry, Small Metal Casting, Electronic Connector Module, Cables, Aerospace Components, Photovoltaic Industry, etc.

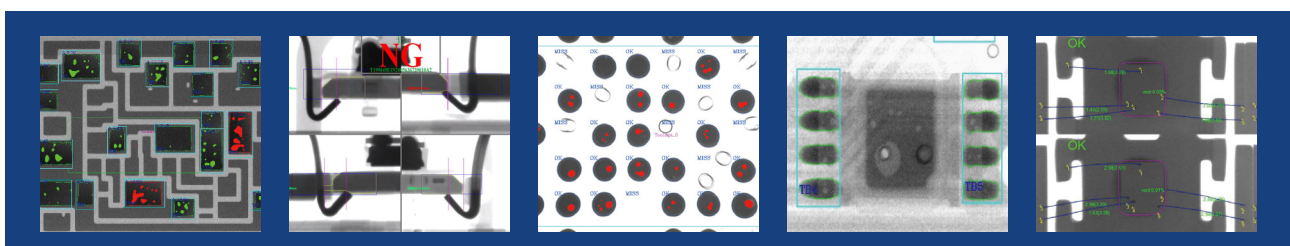
## Application Fields



## Functions and Features



## Inspection Images





A Leader in the Intelligent X-Ray  
Inspection Equipment

## Technical Parameters and Specifications

### System Summary

Footprint	2595(W)×1392(D)×1992(H)mm	Plywood Packing Size	180(W)×170(D)×190(H)cm (X-Ray) 150(W)×105(D)×120(H)cm (Conveyor)
Machine Weight	1900 kg (X-Ray) / 700kg (Conveyor)	Packing Weight	2000kg (X-Ray) / 800kg (Conveyor)
Power Supply	AC 110~220V, 50/60Hz	Power Consumption	3.5 kW

### X-Ray Tube

Tube Type	Sealed	Max. Power	8W
Voltage	0~90kV (Adjustable, 130 KV for Option)	Focus Spot Size	5μm

### Imaging System

Detector	Flat Panel Detector (FPD)	Pixel Size	85μm
Effective Detection Area	130*130mm	Frame Rates	20fps
Pixel Matrix	1536*1536	System Magnification	200X

### Software

Auto-measuring	Auto Inspection and Analysing for Ok & NG Components
CNC Mode	CNC Programmable Inspection, Easy Operation and User Friendly
Rework	Support Rework Database Management System
Data Connection	Support MES/ERP/SPC System
Navigation	Convenient Target Point Positioning System

### Motion Control System

Movement Control	Joystick, Keypad, Mouse & Touch Panel (PLC)
Adjustable Tunnel width	80~350mm
Max. Inspection Sample	400*350mm / 10kg
Min . Inspection Sample	100*80mm
Manipulator	Auto Inline System

### Industrial PC

Monitor	22" FHD LCD Display
System OS	Windows 10 64bit
Hard disk	1TB
RAM	8GB
CPU model	Intel i7 Processor

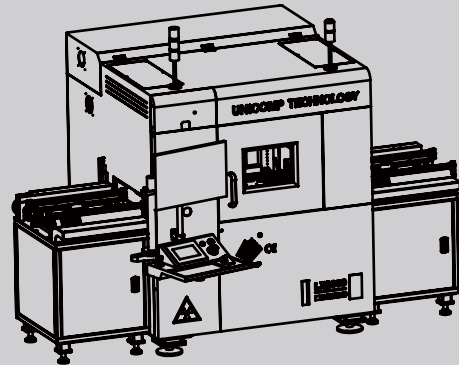
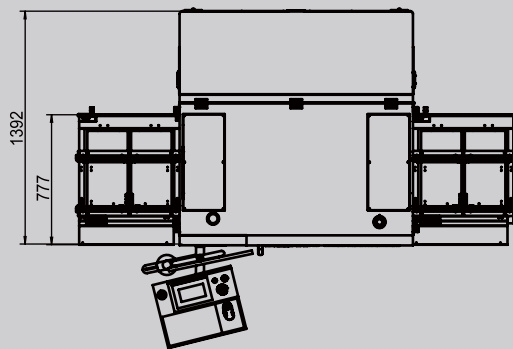
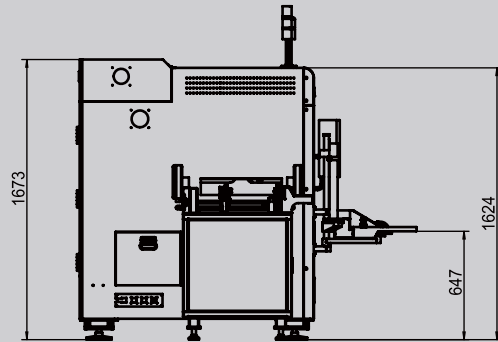
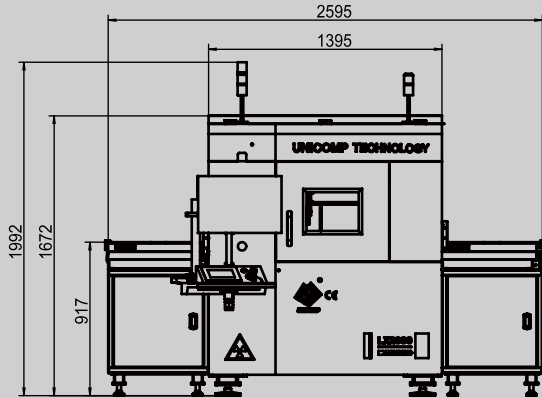
### Other Features

Energy Saving	X-Ray Auto-off when it's out of work over than 5 minutes	Safety Operation	Electromagnetic Interlock, Warning Light
Authority Management	Password Management	X-Ray Safety	<1μSv/h (Meets All International Standards)

## Dimensions and Appearance



Scan the QR-Code to visit  
more information



### UNICOMP TECHNOLOGY CORPORATE:

Wuxi Unicom Technology Co., Ltd (HQ)

No. 11, Lijiang Road, Xinwu District, Wuxi City, Jiangsu Province, P.R.C.

Zip Code: 214112

TEL: +86-510-68506688      FAX: +86-510-81816018

Shenzhen Unicom Technology Co., Ltd

Building 2A, Baoxin Technology Park, Guangyuan 5<sup>th</sup> Road, Guangming District, Shenzhen,  
Guangdong Province P.R.C. Zip:518107

TEL: +86-755-26650316      FAX: +86-755-26650296

Chongqing Unicom Technology Co., Ltd

1<sup>st</sup> Building, No.23 Fushun Blvd, Biquan Street, Bishan District, ChongQing, P.R.C.

Zip Code: 402760

TEL: +86-23-63226131      FAX: +86-23-63228366