



A Leader in the Intelligent X-Ray
Inspection Equipment

CX3000

X-Ray Inspection Equipment



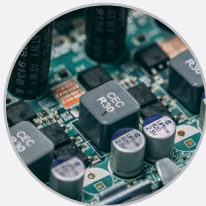
www.global-xray.com
www.unicomp.cn

CX3000

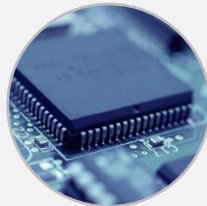


Widely applied for BGA, CSP, Flip Chip, LED, Fuse, Diode, PCB, Semiconductor, Battery Industry, Small Metal Casting, Electronic Connector Module, Cables, Aerospace Components, Photovoltaic Industry, etc.

Application Fields



SMT/PCBA
Inspection



Semiconductor
Inspection



Connector Inspection



Cable Inspection

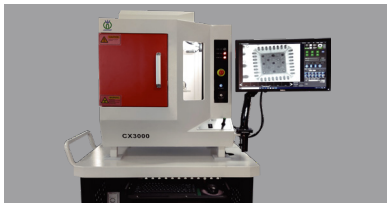


LED Inspection

Functions and Features

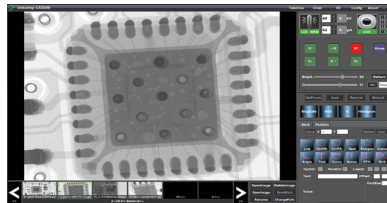
1

Slim Size and Desk-top Design



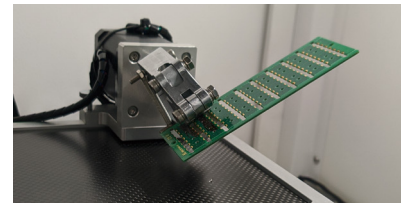
2

Multi-function X-Ray Inspection



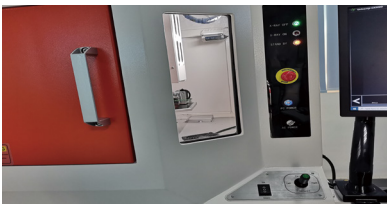
3

Table Up and Down,
Plus PCBA Rotation Jig



4

User Friendly Working Station



5

Safety Electromagnetic Interlock

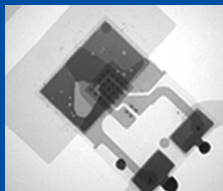
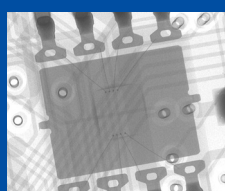
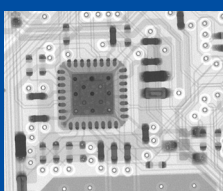


6

Portable with Wheels and Handle



Inspection Images





A Leader in the Intelligent X-Ray
Inspection Equipment

Technical Parameters and Specifications

System Summary

Footprint	1480(W)×750(D)×1680(H)mm	Plywood Packing Size	1500(W)×1150(D)×1150(H)mm
Machine Weight	360 kg (excl. desk)	Packing Weight	560kg (include desk)
Power Supply	AC 110/220V, 50/60Hz	Power Consumption	0.5 kW

X-Ray Tube

Tube Type	Sealed	Max. Power	8W
Voltage	0~90kV (Adjustable)	Focus Spot Size	5μm

Imaging System

Detector	Flat Panel Detector (FPD)	Pixel Size	49.5μm
Effective Detection Area	50*50mm	Frame Rates	30fps
Pixel Matrix	1176*1104	System Magnification	200X

Software

Auto-measuring	BGA Soldering Voids Auto-measuring and Support Data/Graphic Output
Multiple Measuring Tools	Support Measuring Distance, Angle, Diameter, Polygon, PTH filling rate, etc.
Real-time Display	Real-time Displaying the Working Data of Voltage, Current, Angle, Date, etc
Navigation	Navigation in Visual Windows
User Friendly	Easy Operation and User Friendly

Motion Control System

Movement Control	Joystick, Keypad & Mouse
Max. Loading Area/Weight	235*200mm /5kg
Max. Inspection Area	190*165mm
Tilting Angle	±360°
Manipulator	3-axis with X / Y / Z

Industrial PC

Monitor	21.5'' FHD LCD Display
System OS	Windows 10 64bit
Hard disk	1TB
RAM	8GB
CPU model	Intel i7 Processor

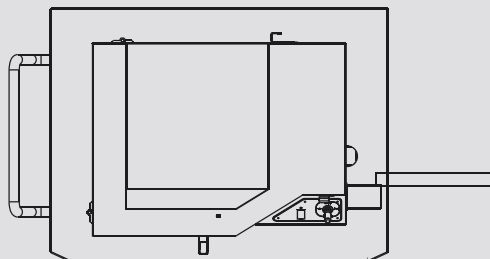
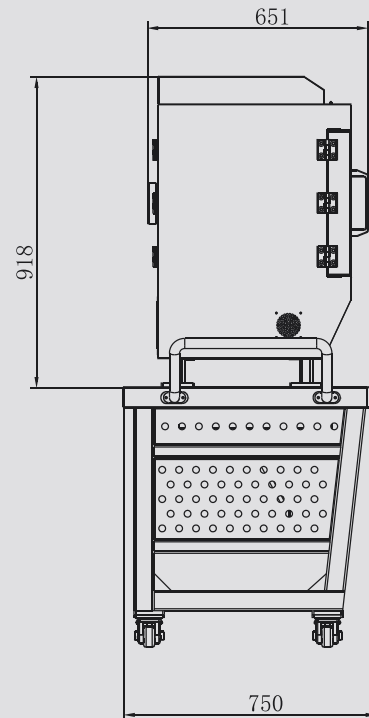
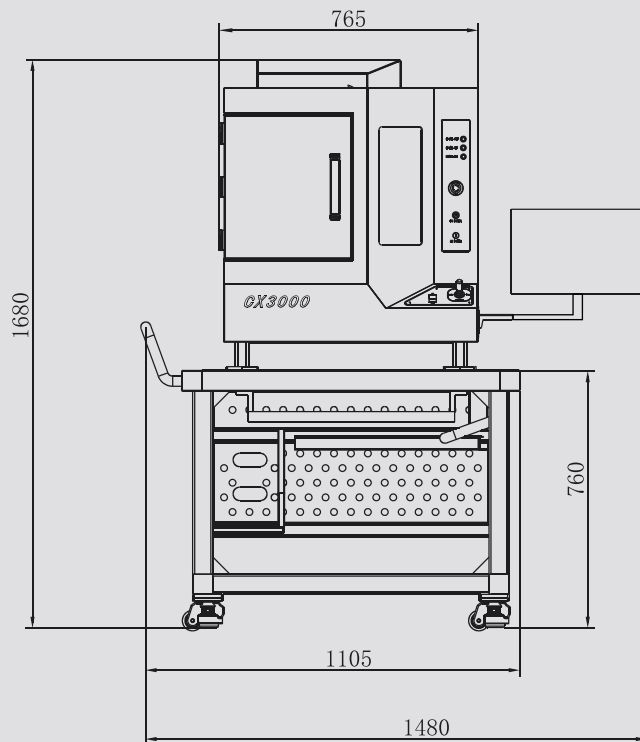
Other Features

Energy Saving	X-Ray Auto-off when it's out of work over than 5 minutes	Safety Operation	Electromagnetic Interlock and Warning Light
Authority Management	Password Management	X-Ray Safety	<1μSv/h (Meets All International Standards)

Dimensions and Appearance



Scan the QR-Code to visit
more information



UNICOMP TECHNOLOGY CORPORATE:

Wuxi Unicom Technology Co., Ltd (HQ)

No. 11, Lijiang Road, Xinwu District, Wuxi City, Jiangsu Province, P.R.C.

Zip Code: 214112

TEL: +86-510-68506688

FAX: +86-510-81816018

Shenzhen Unicom Technology Co., Ltd

Building 2A, Baoxin Technology Park, Guangyuan 5th Road, Guangming District, Shenzhen, Guangdong Province P.R.C. Zip:518107

TEL: +86-755-26650316

FAX: +86-755-26650296

Chongqing Unicom Technology Co., Ltd

1st Building, No.23 Fushun Blvd, Biquan Street, Bishan District, ChongQing, P.R.C.

Zip Code: 402760

TEL: +86-23-63226131

FAX: +86-23-63228366