

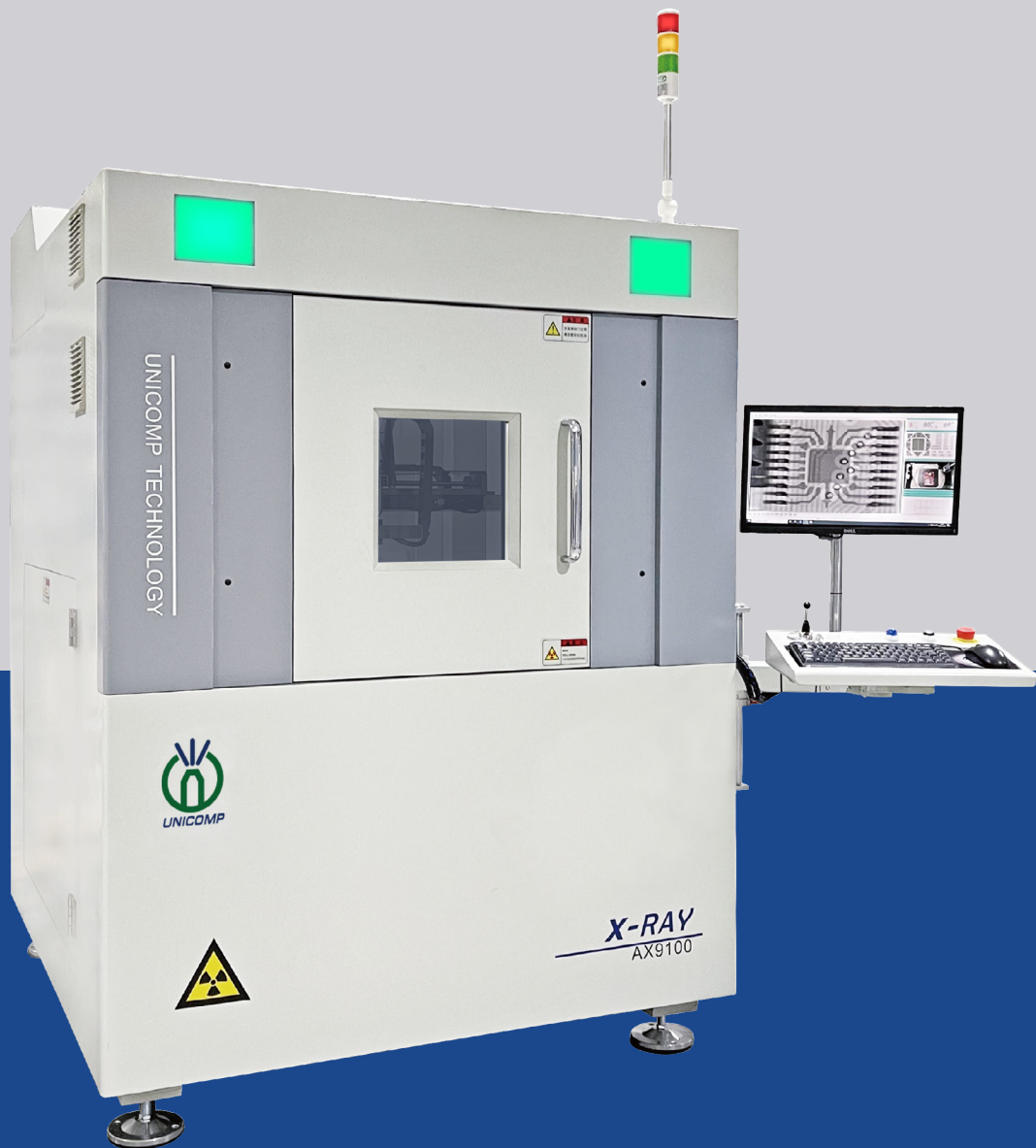


Unicomp Technology

A Leader in the Intelligent X-Ray
Inspection Equipment

AX9100

X-Ray Inspection Equipment



www.global-xray.com

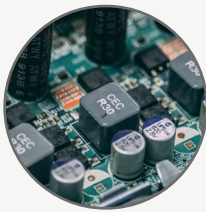
AX9100



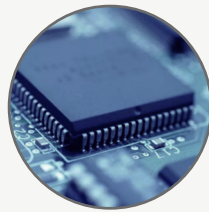
Unicomp Technology

Widely applied for BGA , CSP , Flip Chip, LED , Fuse, Diode, PCB, Semiconductor, Battery Industry, Small Metal Casting, Electronic Connector Module, Cables, Aerospace Components, Photovoltaic Industry, etc.

Application Fields



SMT/PCBA Inspection



Semiconductor Inspection



Lithium Batteries Inspection



LED Inspection



Photovoltaic Inspection

Functions and Features

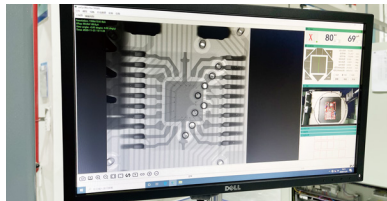
1

Large Size Inspection Table with 360° rotation
Laser Locator for Precise Location



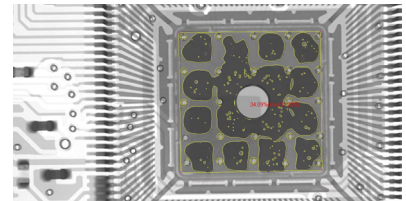
2

Big Magnification (1600X)



3

Accurate Control, CNC Programming
Automatic Positioning



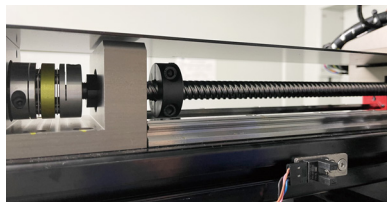
4

FPD 55° Tilting Inspection



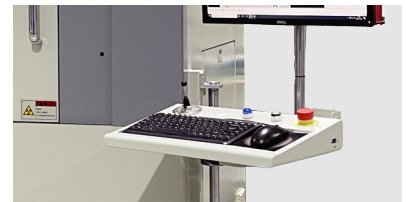
5

7-Axis Movement

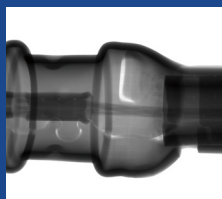
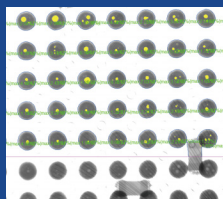
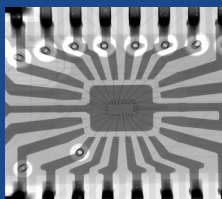


6

Adjustable Console



Inspection Images





A Leader in the Intelligent X-Ray Inspection Equipment

Technical Parameters and Specifications

System Summary

Footprint	1420(W)×1580(D)×2000(H)mm	Plywood Packing Size	1650(W)×1800(D)×2250(H)mm
Machine Weight	2640 kg	Packing Weight	2800 kg
Power Supply	AC 110~220V, 50/60Hz	Power Consumption	3.0 kW

X-Ray Tube

Tube Type	Sealed	Max. Power	40W
Voltage	0~130kV (Adjustable)	Focus Spot Size	7μm

Imaging System

Detector	Flat Panel Detector (FPD)	Pixel Size	85μm
Effective Detection Area	130*130mm	Frame Rates	20fps
Pixel Matrix	1536*1536	System Magnification	1600X

Software

Auto-measuring	BGA Soldering Voids Auto-measuring and Support Data/Graphic Output
Multiple Measuring Tools	Support Measuring Distance, Angle, Diameter, Polygon, PTH filling rate, etc.
CNC Mode	CNC Programmable Inspection, Easy Operation and User Friendly
Real-time Display	Real-time Displaying the Working Data of Voltage, Current, Angle, Date, etc
Navigation	Convenient Target Point Positioning System

Motion Control System

Movement Control	Joystick, Keypad & Mouse
Max. Loading Area/Weight	Φ570mm / 10kg
Max. Inspection Area	450*450mm
Oblique Views	Max. 55° Filting (FPD) / 360° Rotation (Table)
Manipulator	7-axis with X1 / X2 / Y / Z1 / Z2 / T (55°) / R (360°)

Industrial PC

Monitor	21.5'' FHD LCD Display
System OS	Windows 10 64bit
Hard disk	1TB
RAM	8GB
CPU model	Intel i7 Processor

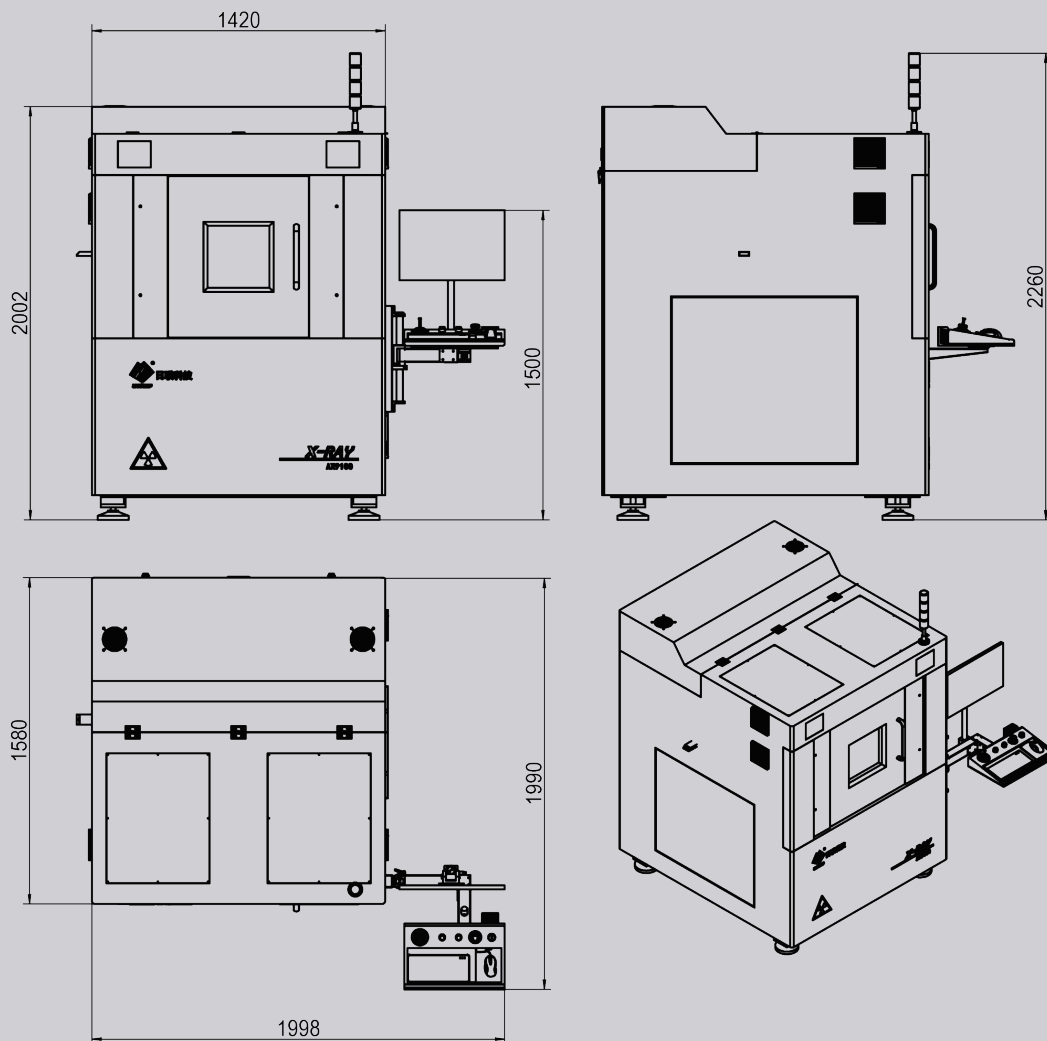
Other Features

Energy Saving	X-Ray Auto-off when it's out of work over than 5 minutes	Safety Operation	Electromagnetic Interlock, Warning Light
Authority Management	Password Management	X-Ray Safety	<1μSv/h (Meets All International Standards)

Dimensions and Appearance



Scan the QR-Code to visit
more information



UNICOMP TECHNOLOGY CORPORATE:

Wuxi Unicom Technology Co., Ltd (HQ)

No. 11, Lijiang Road, Xinwu District, Wuxi City, Jiangsu Province, China

Zip Code: 214112

TEL: +86-510-68506688

FAX: +86-510-81816018

Shenzhen Unicom Technology Co., Ltd

Building A, Bangkai Technology Industrial Park, No. 9 Bangkai Road, High-tech Industrial Park, Guangming District, Shenzhen, China

Zip Code: 518017

TEL: +86-755-26650316

FAX: +86-755-26650296

Chongqing Unicom Technology Co., Ltd

Yingang Industrial Park, No. 71, Tongxing South Road, Beibei District, Chongqing City, China

Zip Code: 400709

TEL: +86-23-63226131

FAX: +86-23-63228366