



A Leader in the Intelligent X-Ray
Inspection Equipment

AX8500

X-Ray Inspection Equipment



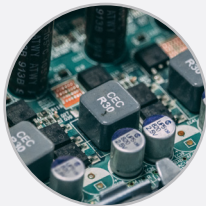
www.global-xray.com
www.unicomp.cn

AX8500

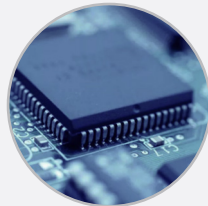


Widely applied for BGA, CSP, Flip Chip, LED, Fuse, Diode, PCB, Semiconductor, Battery Industry, Small Metal Casting, Electronic Connector Module, Cables, Aerospace Components, Photovoltaic Industry, etc.

Application Fields



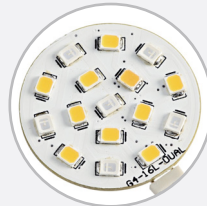
SMT/PCBA
Inspection



Semiconductor
Inspection



Lithium Batteries
Inspection



LED Inspection



Photovoltaic
Inspection

Functions and Features

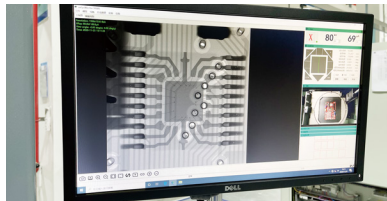
1

Large Size Inspection Table with 360° rotation
Laser Locator for Precise Location



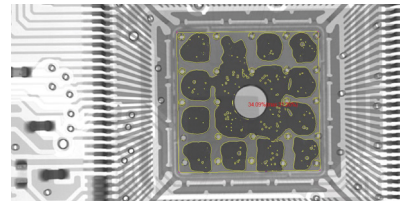
2

Magnification (1000X)



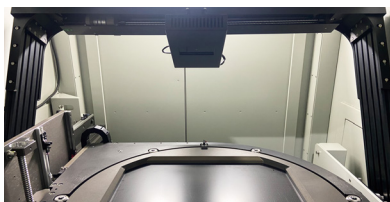
3

Accurate Control, CNC Programming
Automatic Positioning



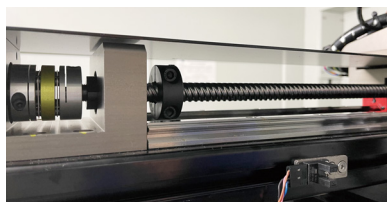
4

FPD 55° Tilting Inspection



5

6-Axis Movement

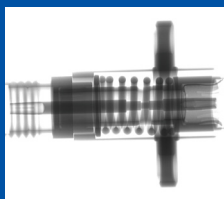
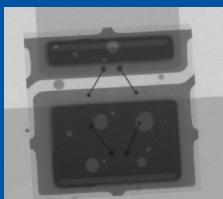
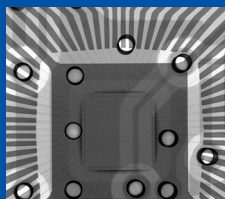
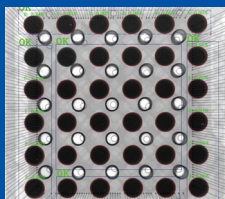


6

Adjustable Console



Inspection Images





A Leader in the Intelligent X-Ray Inspection Equipment

Technical Parameters and Specifications

System Summary

Footprint	1370(W)×1300(D)×1700(H)mm	Plywood Packing Size	1600(W)×1600(D)×2000(H)mm
Machine Weight	1670 kg	Packing Weight	1920 kg
Power Supply	AC 110~220V, 50/60Hz	Power Consumption	2.0 kW

X-Ray Tube

Tube Type	Sealed	Max. Power	25W
Voltage	0~110kV (Adjustable)	Focus Spot Size	5μm

Imaging System

Detector	Flat Panel Detector (FPD)	Pixel Size	85μm
Effective Detection Area	130*130mm	Frame Rates	20fps
Pixel Matrix	1536*1536	System Magnification	1000X

Software

Auto-measuring	BGA Soldering Voids Auto-measuring and Support Data/Graphic Output
Multiple Measuring Tools	Support Measuring Distance, Angle, Diameter, Polygon, PTH filling rate, etc.
CNC Mode	CNC Programmable Inspection, Easy Operation and User Friendly
Real-time Display	Real-time Displaying the Working Data of Voltage, Current, Angle, Date, etc
Navigation	Convenient Target Point Positioning System

Motion Control System

Movement Control	Joystick, Keypad & Mouse
Max. Loading Area/Weight	Φ570mm / 10kg
Max. Inspection Area	450*450mm
Oblique Views	Max. 55° Filting (FPD) / 360° Rotation (Table)
Manipulator	6-axis with X1 / X2 / Y / Z1 / T (55°) /R (360°)

Industrial PC

Monitor	21.5'' FHD LCD Display
System OS	Windows 10 64bit
Hard disk	1TB
RAM	8GB
CPU model	Intel i7 Processor

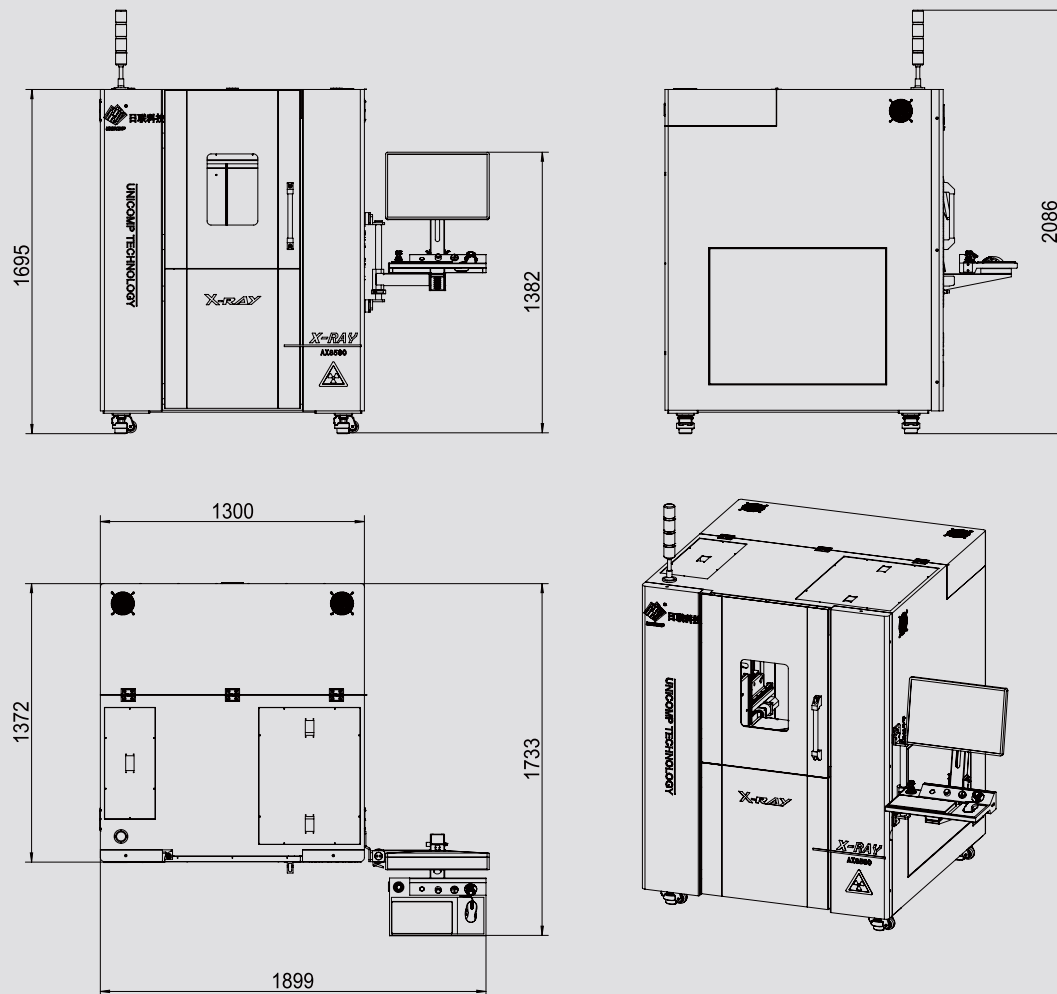
Other Features

Energy Saving	X-Ray Auto-off when it's out of work over than 5 minutes	Safety Operation	Electromagnetic Interlock, Warning Light
Authority Management	Password Management	X-Ray Safety	<1μSv/h (Meets All International Standards)

Dimensions and Appearance



Scan the QR-Code to visit
more information



UNICOMP TECHNOLOGY CORPORATE:

Wuxi Unicomp Technology Co., Ltd (HQ)

No. 11, Lijiang Road, Xinwu District, Wuxi City, Jiangsu Province, P.R.C.

Zip Code: 214112

TEL: +86-510-68506688

FAX: +86-510-81816018

Shenzhen Unicomp Technology Co., Ltd

Building 2A, Baoxin Technology Park, Guangyuan 5th Road, Guangming District, Shenzhen, Guangdong Province P.R.C. Zip:518107

TEL: +86-755-26650316

FAX: +86-755-26650296

Chongqing Unicomp Technology Co., Ltd

1st Building, No.23 Fushun Blvd, Biquan Street, Bishan District, ChongQing, P.R.C.

Zip Code: 402760

TEL: +86-23-63226131

FAX: +86-23-63228366