



Unicomp Technology

A Leader in the Intelligent X-Ray
Inspection Equipment

AX8200_{MAX}

X-Ray Inspection Equipment



www.global-xray.com

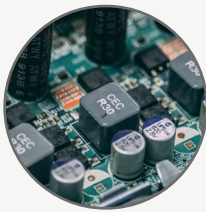
AX8200MAX



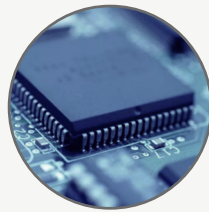
Unicomp Technology

Widely applied for BGA, CSP, Flip Chip, LED, Fuse, Diode, PCB, Semiconductor, Battery Industry, Small Metal Casting, Electronic Connector Module, Cables, Aerospace Components, Photovoltaic Industry, etc.

Application Fields



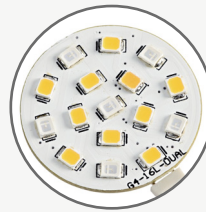
SMT/PCBA
Inspection



Semiconductor
Inspection



Lithium Batteries
Inspection



LED Inspection



Photovoltaic
Inspection

Functions and Features

1

Large Size Inspection Table
Laser Locator for Precise Location



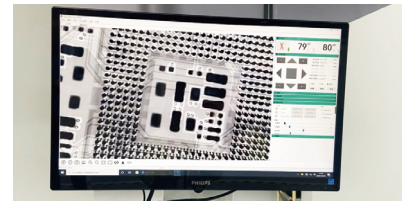
2

24" FHD Interactive Touch LCD Display



3

Accurate Control, CNC Programming
Automatic Positioning



4

FPD 60° Tilting Inspection



5

Fingerprint Access Management System

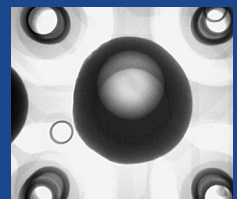
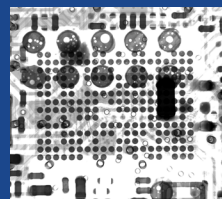
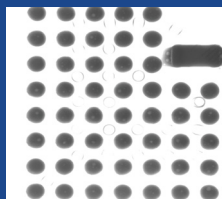
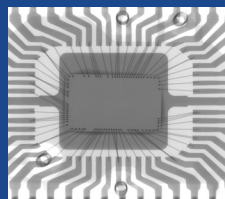
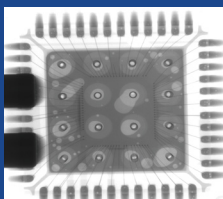


6

Real-time Monitoring of Radiation



Inspection Images





A Leader in the Intelligent X-Ray Inspection Equipment

Technical Parameters and Specifications

System Summary

Footprint	1280(W)×1500(D)×1700(H)mm	Plywood Packing Size	1750(W)×1920(D)×2000(H)mm
Machine Weight	1370 kg	Packing Weight	1520 kg
Power Supply	AC 110/220V, 50/60Hz	Power Consumption	2.0 kW

X-Ray Tube

Tube Type	Sealed	Max. Power	8W
Voltage	0~90kV (Adjustable)	Focus Spot Size	5μm

Imaging System

Detector	Flat Panel Detector (FPD)	Pixel Size	85μm
Effective Detection Area	130*130mm	Frame Rates	20fps
Pixel Matrix	1536*1536	System Magnification	600X

Software

Auto-measuring	BGA Soldering Voids Auto-measuring and Support Data/Graphic Output
Multiple Measuring Tools	Support Measuring Distance, Angle, Diameter, Polygon, PTH filling rate, etc.
CNC Mode	CNC Programmable Inspection, Easy Operation and User Friendly
Real-time Display	Real-time Displaying the Working Data of Voltage, Current, Angle, Date, etc
Navigation	Convenient Target Point Positioning System

Motion Control System

Movement Control	Joystick, Keypad, Mouse & Touch Panel
Max. Loading Area/Weight	610*610mm / 10kg
Max. Inspection Area	550*550mm
Oblique Views	Max. 60°
Manipulator	6-axis with X / Y / Z1 / Z2 / T1 / T2

Industrial PC

Monitor	24" FHD Interactive Touch LCD Display
System OS	Windows 10 64bit
Hard disk	1TB
RAM	8GB
CPU model	Intel i7 Processor

Other Features

Door Open	Electric Sliding	X-Ray Safety	<1μSv/h (Meets All International Standards)
Authority Management	Fingerprint Access Management System, and Support Password Accessing.	Safety Operation	Electromagnetic Interlock, Warning Light and Real-time Radiation Leakage Monitor

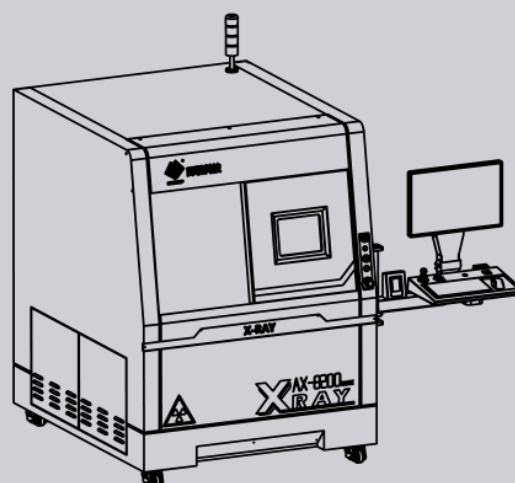
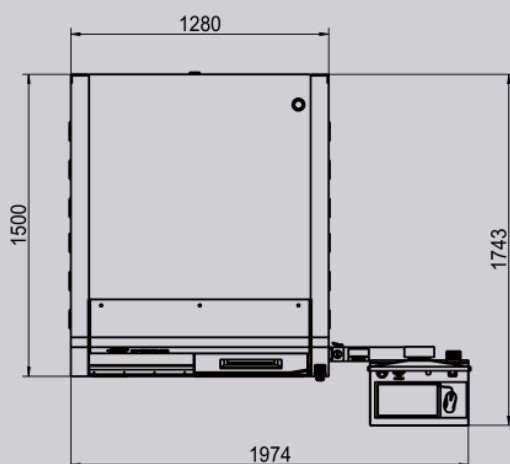
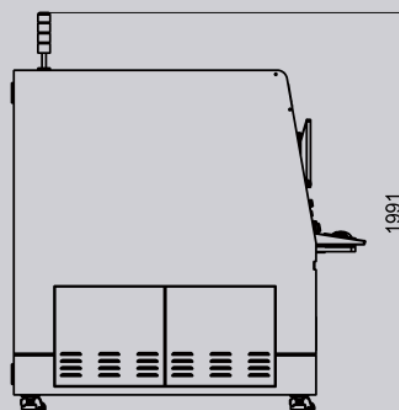
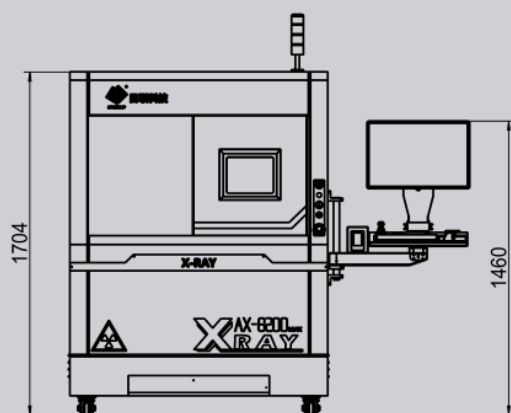
* Specifications are subject to change without notice, All trademarks are the property of the system maker.

LOT No.20211216

Dimensions and Appearance



Scan the QR-Code to visit
more information



UNICOMP TECHNOLOGY CORPORATE:

Wuxi Unicom Technology Co., Ltd (HQ)

No. 11, Lijiang Road, Xinwu District, Wuxi City, Jiangsu Province, P.R.C.

Zip Code: 214112

TEL: +86-510-68506688 FAX: +86-510-81816018

Shenzhen Unicom Technology Co., Ltd

Building 2A, Baoxin Technology Park, Guangyuan 5th Road, Guangming District, Shenzhen,
Guangdong Province P.R.C. Zip:518107

TEL: +86-755-26650316 FAX: +86-755-26650296

Chongqing Unicom Technology Co., Ltd

1st Building, No.23 Fushun Blvd, Biquan Street, Bishan District, ChongQing, P.R.C.

Zip Code: 402760

TEL: +86-23-63226131 FAX: +86-23-63228366