



Unicomp Technology

A Leader in the Intelligent X-Ray
Inspection Equipment

AX8200

X-Ray Inspection Equipment



www.global-xray.com

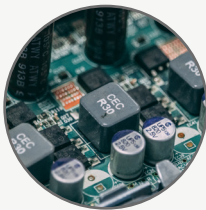
AX8200



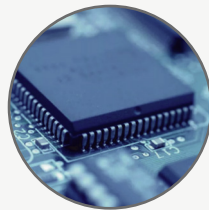
Unicomp Technology

Widely applied for BGA , CSP , Flip Chip, LED , Fuse, Diode, PCB, Semiconductor, Battery Industry, Small Metal Casting, Electronic Connector Module, Cables, Aerospace Components, Photovoltaic Industry, etc.

Application Fields



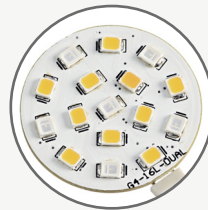
SMT/PCBA Inspection



Semiconductor Inspection



Lithium Batteries Inspection



LED Inspection

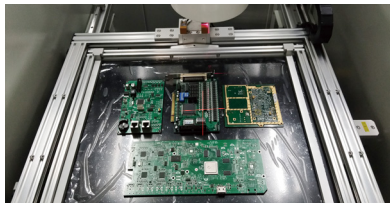


Photovoltaic Inspection

Functions and Features

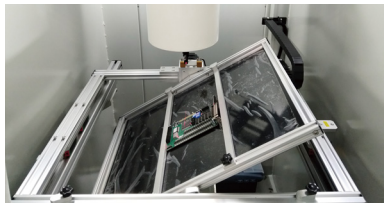
1

Large Size Inspection Table, Laser Locator for Precise Location



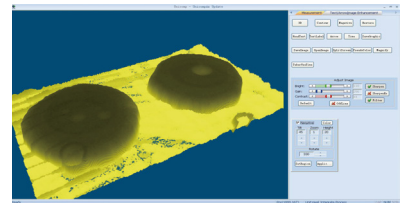
2

$\pm 60^\circ$ Oblique Views Table



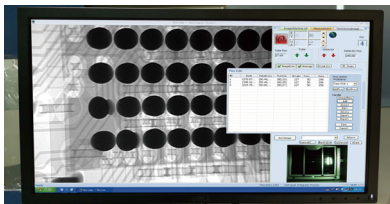
3

Analog 3D Function



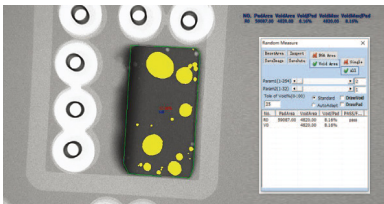
4

CNC Programming, Automatic BGA Voids Measurement, Results Can be Exported



5

Mark Irregular Graphics

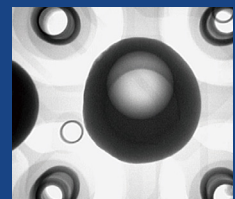
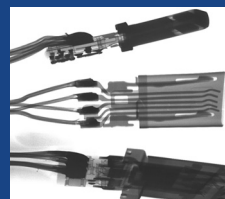
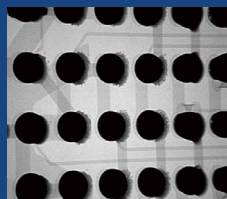
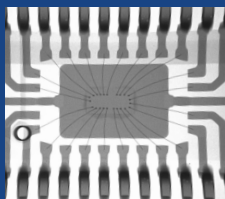


6

Safety Electromagnetic Interlock



Inspection Images





A Leader in the Intelligent X-Ray Inspection Equipment

Technical Parameters and Specifications

System Summary

Footprint	1080(W)×1180(D)×1730(H)mm	Plywood Packing Size	1500(W)×1300(D)×1950(H)mm
Machine Weight	1150 kg	Packing Weight	1164 kg
Power Supply	AC 110~220V, 50/60Hz	Power Consumption	1.0 kW

X-Ray Tube

Tube Type	Sealed	Max. Power	8W
Voltage	0~90kV (Adjustable)	Focus Spot Size	5μm

Imaging System

Detector	Flat Panel Detector (option 4" i.i. Detector)	Pixel Size	85μm
Effective Inspection Area	130*130mm	Frame Rates	20fps
Pixel Matrix	1536*1536	System Magnification	600X

Software

Auto-measuring	BGA Soldering Voids Auto-measuring and Support Data/Graphic Output
Multiple Measuring Tools	Support Measuring Distance, Angle, Diameter, Polygon, PTH filling rate, etc.
CNC Mode	CNC Programmable Inspection, Easy Operation and User Friendly
Real-time Display	Real-time Displaying the Working Data of Voltage, Current, Angle, Date, etc
Navigation	Laser Locator for Precise Location

Motion Control System

Movement Control	Joystick, Keypad & Mouse
Max. Loading Area/Weight	510*420mm /10kg
Max. Inspection Area	435*385mm
Oblique Views	Max. ±60°
Manipulator	5-axis with X / Y / Z1 / Z2 / T

Industrial PC

Monitor	21.5" FHD LCD Display
System OS	Windows 10 64bit
Hard disk	1TB
RAM	8GB
CPU model	Intel i7 Processor

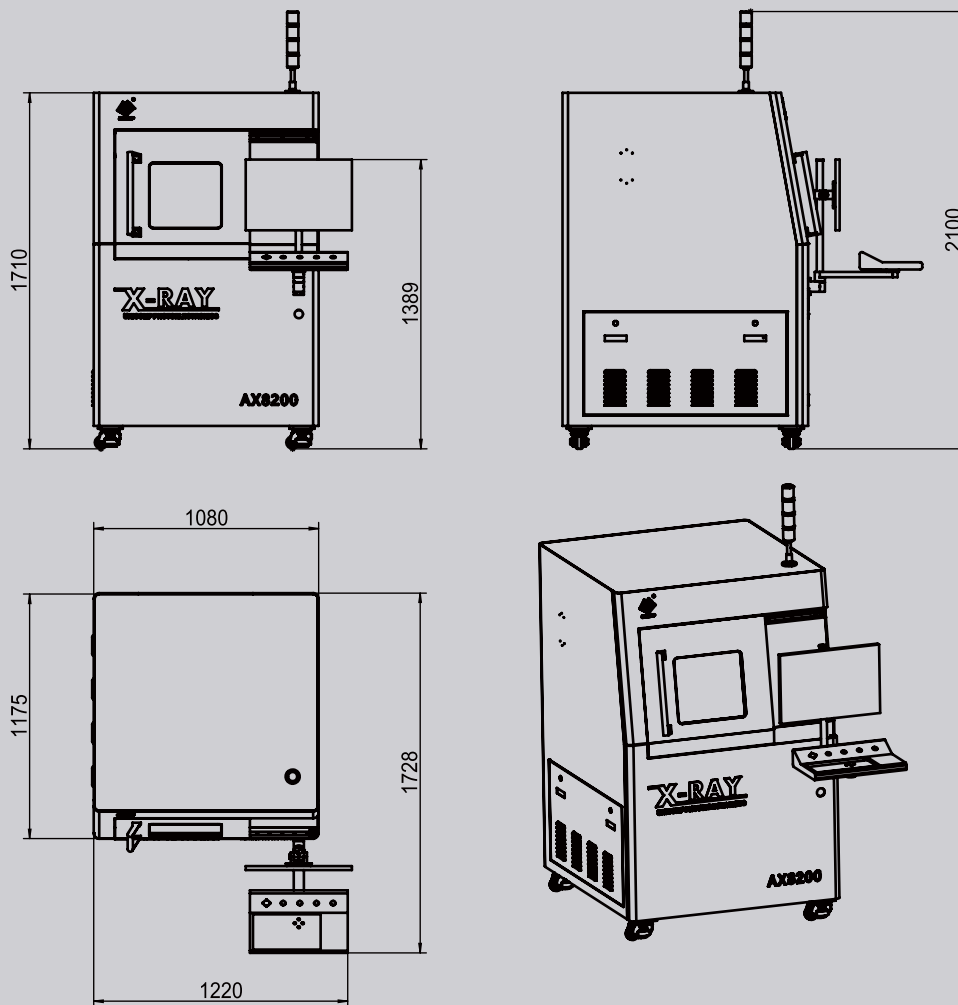
Other Features

Energy Saving	X-Ray Auto-off when it's out of work over than 5 minutes	Safety Operation	Electromagnetic Interlock and warning Light
Portable Design	Mounted with Wheels on Machine Bottom	X-Ray Safety	<1μSv/h (Meets All International Standards)

Dimensions and Appearance



Scan the QR-Code to visit
more information



UNICOMP TECHNOLOGY CORPORATE:

Wuxi Unicom Technology Co., Ltd (HQ)

No. 11, Lijiang Road, Xinwu District, Wuxi City, Jiangsu Province, China

Zip Code: 214112

TEL: +86-510-68506688 FAX: +86-510-81816018

Shenzhen Unicom Technology Co., Ltd

Building A, Bangkai Technology Industrial Park, No. 9 Bangkai Road, High-tech Industrial Park,
Guangming District, Shenzhen, China

Zip Code: 518017

TEL: +86-755-26650316 FAX: +86-755-26650296

Chongqing Unicom Technology Co., Ltd

Yingang Industrial Park, No. 71, Tongxing South Road, Beibei District, Chongqing City, China

Zip Code: 400709

TEL: +86-23-63226131 FAX: +86-23-63228366