



A Leader in the Intelligent X-Ray
Inspection Equipment

AX7900

X-Ray Inspection Equipment



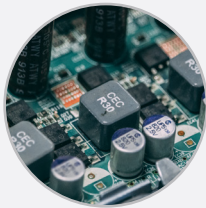
www.global-xray.com
www.unicomp.cn

AX7900

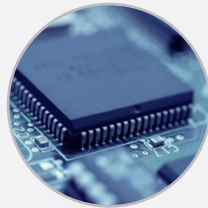


Widely applied for BGA, CSP, Flip Chip, LED, Fuse, Diode, PCB, Semiconductor, Battery Industry, Small Metal Casting, Electronic Connector Module, Cables, Aerospace Components, Photovoltaic Industry, etc.

Application Fields



SMT/PCBA
Inspection



Semiconductor
Inspection



Lithium Batteries
Inspection



LED Inspection

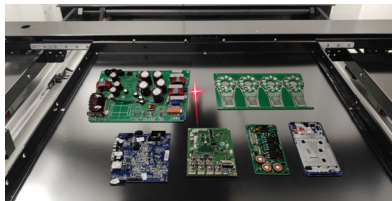


Photovoltaic
Inspection

Functions and Features

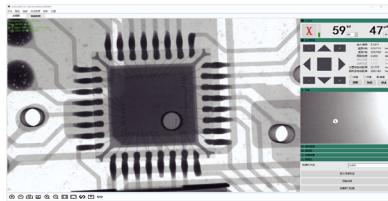
1

Large Size Inspection Table
Laser Locator for Precise Location



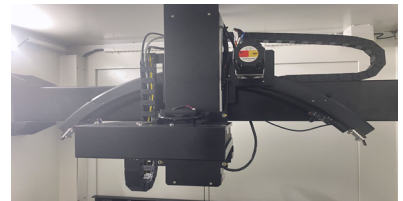
2

Accurate Control, CNC Programming
Automatic Positioning



3

FPD Tilting $\pm 30^\circ$



4

Safely Electromagnetic Interlock



5

Fingerprint Access Management System

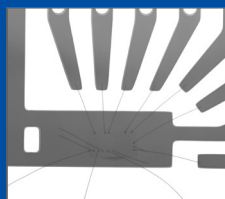
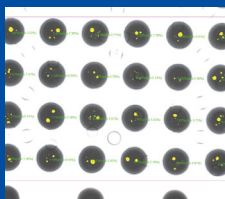


6

Real-time Monitoring of Radiation



Inspection Images





A Leader in the Intelligent X-Ray
Inspection Equipment

Technical Parameters and Specifications

System Summary

| | | | |
|----------------|---------------------------|----------------------|---------------------------|
| Footprint | 1200(W)×1200(D)×1500(H)mm | Plywood Packing Size | 1350(W)×1350(D)×1800(H)mm |
| Machine Weight | 1130 kg | Packing Weight | 1330 kg |
| Power Supply | AC 110/220V, 50/60Hz | Power Consumption | 1.3 kW |

X-Ray Tube

| | | | |
|-----------|---------------------|-----------------|-----|
| Tube Type | Sealed | Max. Power | 8W |
| Voltage | 0~90kV (Adjustable) | Focus Spot Size | 5μm |

Imaging System

| | | | |
|--------------------------|---------------------------|----------------------|-------|
| Detector | Flat Panel Detector (FPD) | Pixel Size | 85μm |
| Effective Detection Area | 130*130mm | Frame Rates | 20fps |
| Pixel Matrix | 1536*1536 | System Magnification | 600X |

Software

| | |
|--------------------------|--|
| Auto-measuring | BGA Soldering Voids Auto-measuring and Support Data/Graphic Output |
| Multiple Measuring Tools | Support Measuring Distance, Angle, Diameter, Polygon, PTH filling rate, etc. |
| CNC Mode | CNC Programmable Inspection, Easy Operation and User Friendly |
| Real-time Display | Real-time Displaying the Working Data of Voltage, Current, Angle, Date, etc |
| Navigation | Convenient Target Point Positioning System |

Motion Control System

| | |
|--------------------------|---------------------------------|
| Movement Control | Joystick, Keypad & Mouse |
| Max. Loading Area/Weight | 520*420mm / 10kg |
| Max. Inspection Area | 460*400mm |
| Tilting Angle | ±30° |
| Manipulator | 5-axis with X / Y / Z1 / Z2 / T |

Industrial PC

| | |
|-----------|---------------------|
| Monitor | 24" FHD LCD Display |
| System OS | Windows 10 64bit |
| Hard disk | 1TB |
| RAM | 8GB |
| CPU model | Intel i7 Processor |

Other Features

| | | | |
|----------------------|---|------------------|--|
| Energy Saving | X-Ray Auto-off when it's out of work over than 5 minutes | X-Ray Safety | <1μSv/h (Meets All International Standards) |
| Authority Management | Fingerprint Access Management System, and Support Password Accessing. | Safety Operation | Electromagnetic Interlock, Warning Light and Real-time Radiation Leakage Monitor |

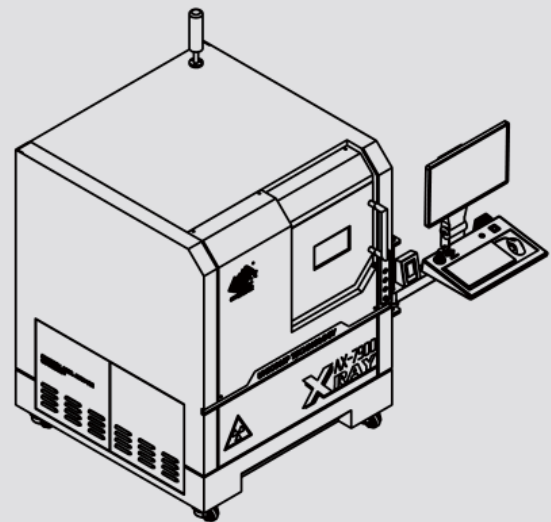
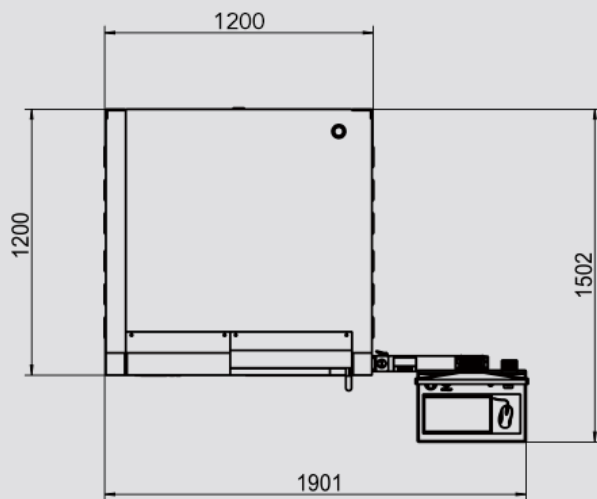
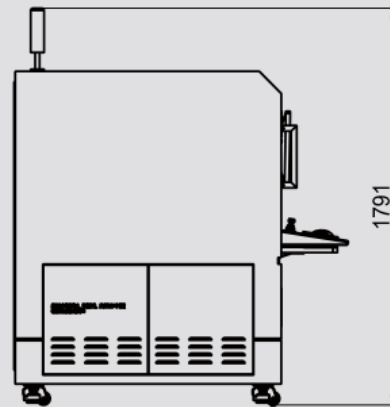
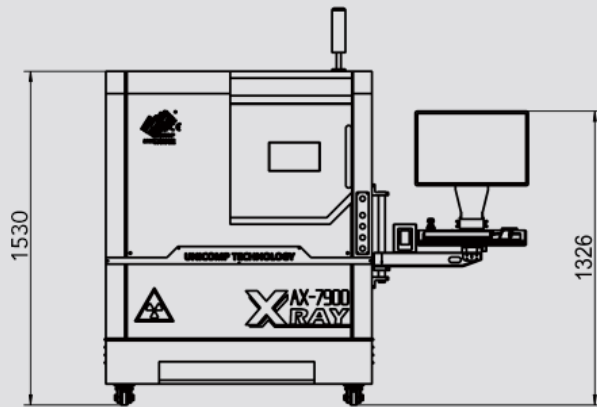
* Specifications are subject to change without notice, All trademarks are the property of the system maker.

LOT No.20220425

Dimensions and Appearance



Scan the QR-Code to visit
more information



UNICOMP TECHNOLOGY CORPORATE:

Wuxi Unicomp Technology Co., Ltd (HQ)

No. 11, Lijiang Road, Xinwu District, Wuxi City, Jiangsu Province, P.R.C.

Zip Code: 214112

TEL: +86-510-68506688 FAX: +86-510-81816018

Shenzhen Unicomp Technology Co., Ltd

Building 2A, Baoxin Technology Park, Guangyuan 5th Road, Guangming District, Shenzhen,
Guangdong Province P.R.C. Zip:518107

TEL: +86-755-26650316 FAX: +86-755-26650296

Chongqing Unicomp Technology Co., Ltd

1st Building, No.23 Fushun Blvd, Biquan Street, Bishan District, ChongQing, P.R.C.

Zip Code: 402760

TEL: +86-23-63226131 FAX: +86-23-63228366